

VentA Hood®

INSTALLATION INSTRUCTIONS FOR PYD18 EUROPA VENT-A-HOODS

WARNING - TO REDUCE THE RISK OF FIRE, ELECTRIC SHOCK, OR INJURY TO PERSONS, OBSERVE THE FOLLOWING:

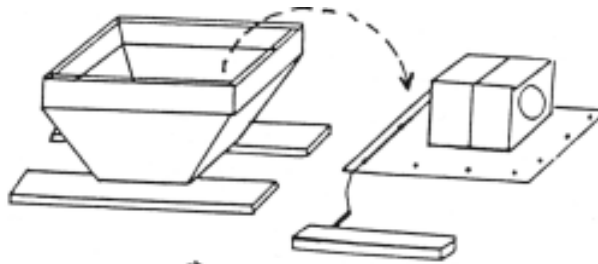
- A. Installation Work and Electrical Wiring Must Be Done By Qualified Person(s) In Accordance With All Applicable Codes And Standards, Including Fire-Rated Construction.
- B. When cutting or drilling into wall or ceiling, do not damage electrical wiring and other hidden utilities.
- C. Ducted fans must always be vented to the outdoors.
- D. Sufficient air is needed for proper combustion and exhausting of gases through the flue (chimney) of fuel burning equipment to prevent back drafting. Follow the heating equipment manufacturer's guideline and safety standards such as those published by the National Fire Protection Association (NFPA), and the American Society for Heating, Refrigeration and Air Conditioning Engineers (ASHRAE), and local code authorities.

WARNING - TO REDUCE THE RISK OF FIRE, USE ONLY METAL DUCTWORK.

Read and Save These Instructions All Hoods Should Be Installed By A Qualified Installer

Step 1 . . .

Set hood on floor with wood pallet still attached to top.

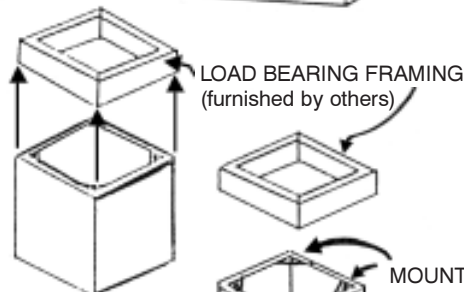


Step 2 . . .

Remove blower deck, light assembly and transition from hood.

Step 3 . . .

Install duct cover to load bearing framing in ceiling. For additional stability in duct covers over 24" tall, use 1/4" all-threaded rods.

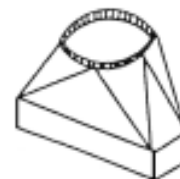
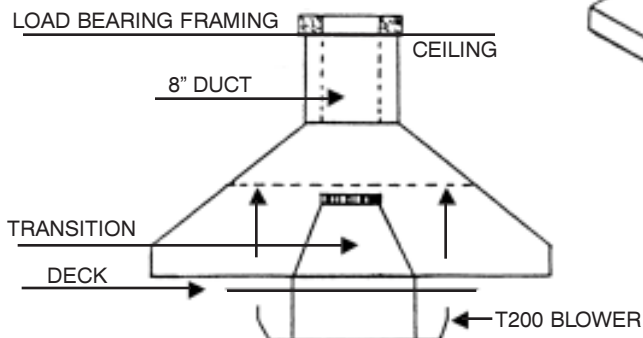
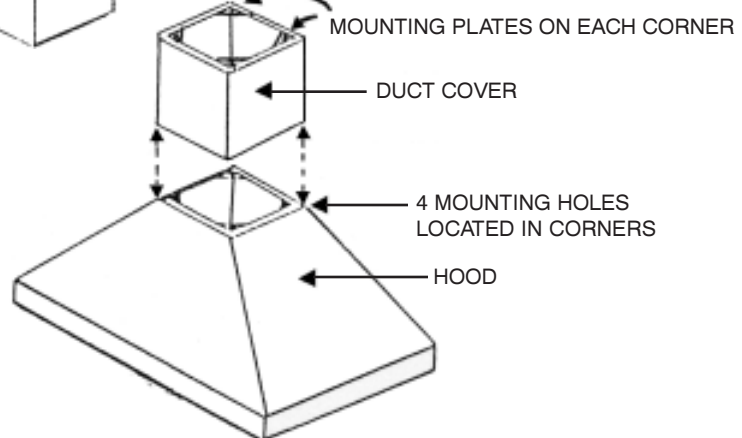


Step 4 . . .

Run 8" diameter duct and wiring through ceiling with section long enough to reach transition on hood.

Step 5 . . .

Attach hood to bottom of duct cover and re-install blower and light units.

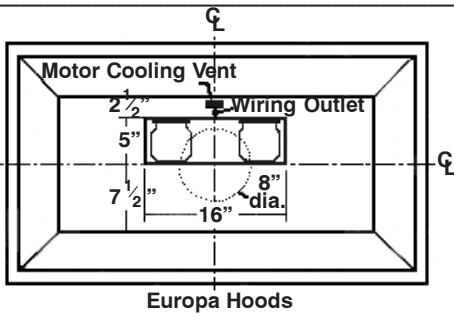


5" x 16" to 8" DIAMETER
VP546
TRANSITION
FURNISHED
WITH HOOD



Turn Page For More Instructions

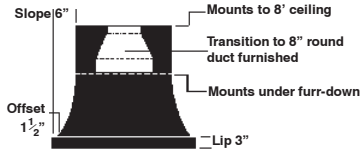
Step 6. — Connect ducting.



| Blower | Minimum Round Duct Size | Square Inches |
|--------------------|-------------------------|---------------|
| T-200 Dual 600 CFM | 8" (or equivalent) | 50 |

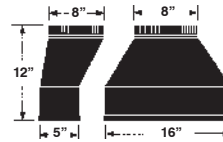
1. Attach venting (before replacing deck if necessary). Do not restrict ducting anywhere including roof jacks or wall louvers. Do not turn sharp turns with ducting. Make gradual turns or 45° angles.

Standard Details



Proper transition is furnished with hood.

For use on all T-200 blowers with 8" duct



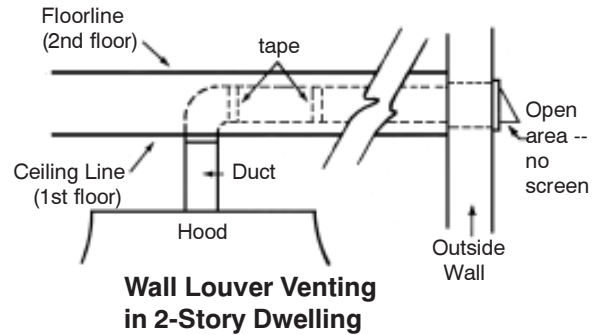
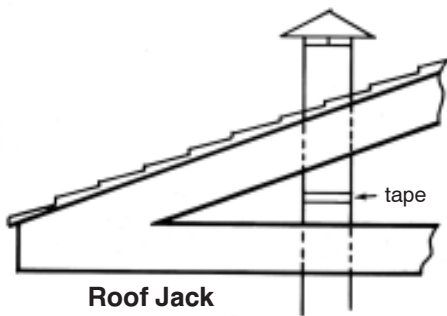
Step 7. — Connect electrical.

Follow label instructions and remove motor plate. Unplug motor and remove, being careful to not damage blower wheel. Connect electrical, black to black, white to white and ground to lug provided. Replace motor(s) and don't forget to plug them back in. Replace blower front and be sure it is secured properly and blower wheel(s) turn freely. Model T200, 3.4 Amps. Hoods with heat lamps and/or halogen lamps, 8.0 Amps.

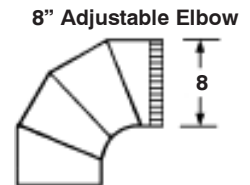
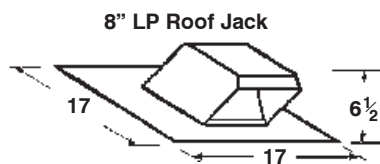
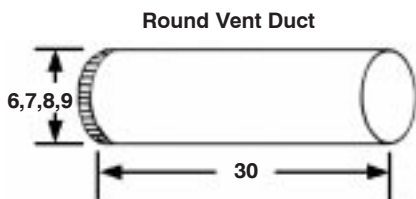
Observe All Governing Codes and Ordinances

Caution: To reduce the risk of fire or electrical shock, do not use this fan with any solid state variable speed control device.

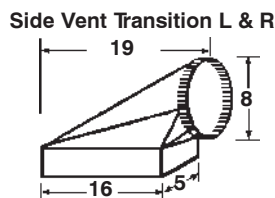
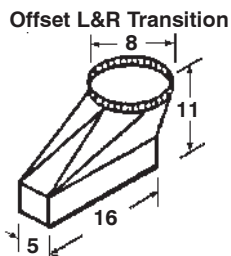
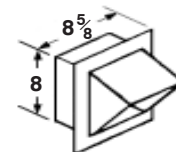
Methods of Ducting Your Vent-A-Hood



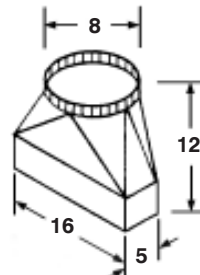
Venting Materials Available from Vent-A-Hood



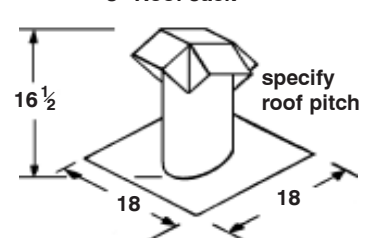
8" Wall Louver



Island Transition



8" Roof Jack



Other transitions by Special Order