

648PROG



FEATURES

Dual refrigeration, plus a third evaporator dedicated just to the roomy crisper drawers

Clear-view, triple-pane and UV-resistant glass door

Over 30 cu. ft. of storage (18.5 refrigerator, 11.7 freezer)

Microprocessor control for peak performance

Stainless steel construction for decades of use

"Soft bright" interior lighting for superior visibility

Automatic ice maker with advanced water filtration system

Exterior temperature display for easy reading

Rigorously tested in our U.S. manufacturing facilities to ensure decades of use

Exceptional 24/7 support from Madison, WI-based Customer Care team

Easy-sliding bins

Tough-and-glide crisper drawer seals tight

Adjustable shelves and dividers for flexible organization

Auto-close door for maximum refrigeration

Flip-up grille for easy maintenance access

ACCESSORIES

Egg Container

Refrigerator Drawer Dividers

Slide Out Bin

Water Filter 4204490

90° door stop

Stainless steel front and side kickplates

Stainless steel slide-out refrigerator bin

Stainless steel side panels and top for freestanding application

Replacement water filter

Accessories are available through an authorized dealer.
For local dealer information, visit subzero-wolf.com/locator.



PRODUCT DETAILS

REFRIGERATOR

- One glass crisper lid
- One stationary glass shelf
- Two adjustable stainless steel slide-out bins
- Three adjustable glass shelves
- Interchangeable drawer dividers

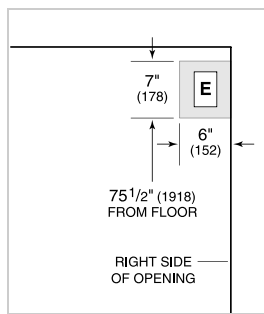
FREEZER

- One stationary stainless steel shelf
- Three adjustable stainless steel shelves
- Stainless steel ice bucket
- Automatic ice maker

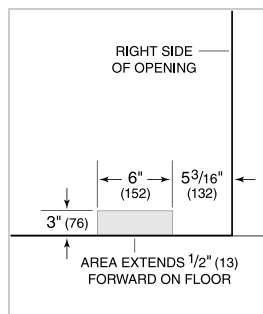
PRODUCT SPECIFICATIONS

| | |
|-----------------------|--------------------------|
| Model | 648PROG |
| Dimensions | 48"W x 84"H x 24"D |
| Door Clearance | 30 3/4" |
| Weight | 875 lbs |
| Refrigerator Capacity | 18.5 cu. ft. |
| Freezer Capacity | 11.7 cu. ft. |
| Electrical Supply | 115 VAC, 60 Hz |
| Electrical Service | 15 amp dedicated circuit |
| Receptacle | 3-prong grounding-type |

ELECTRICAL

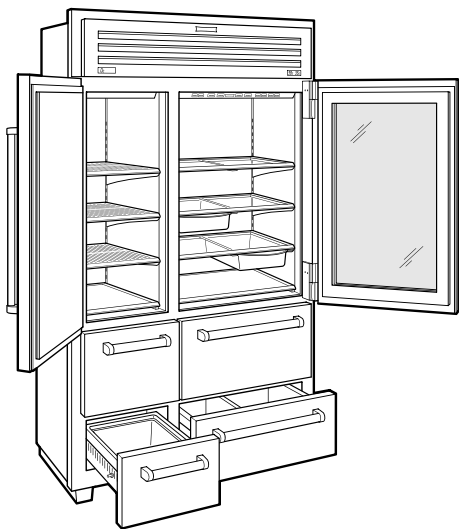


PLUMBING



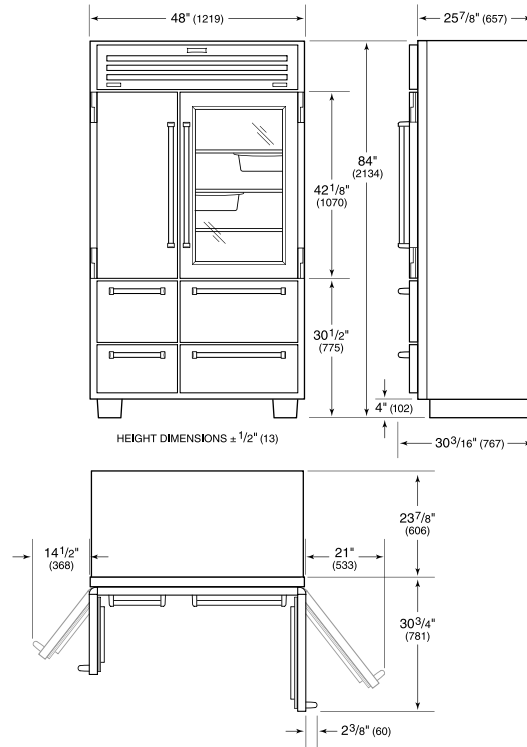
NOTE: Dimensions in parenthesis are in millimeters unless otherwise specified

INTERIOR VIEW

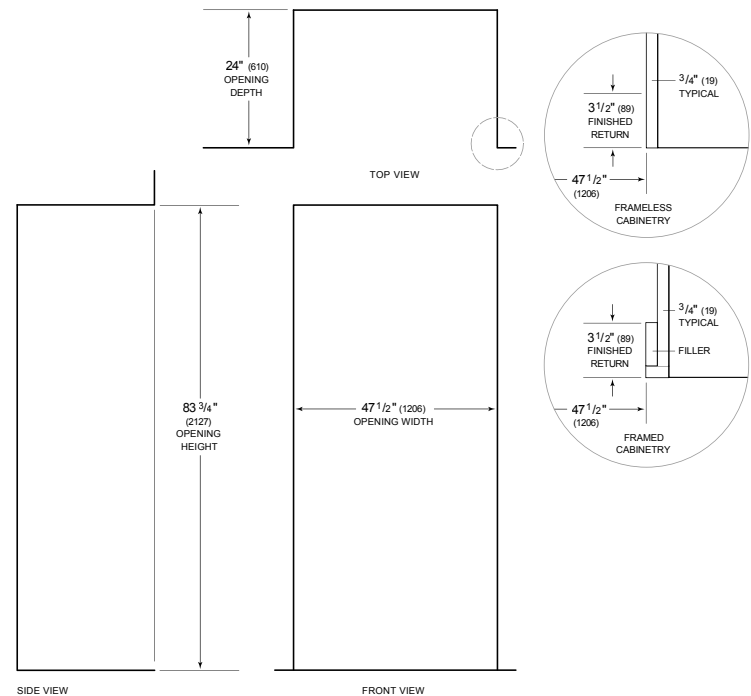


This illustration is intended for interior reference only and may not represent the exterior of the model being specified.

DIMENSIONS



STANDARD INSTALLATION



NOTE: 3 1/2" (89) finished returns will be visible and should be finished to match cabinetry