

**UC-15IPO**

**FEATURES**

Approved for outdoor use

Produces up to 50 lbs. of ice per day

Clean and change filter indicator light

Water-filtration system reduces contaminants, chlorine taste and odor

Built-in ice scoop

Two, four and eight-hour delay feature

Easy-access control panel

Produces ice in temperatures up to 100° F

Rigorously tested in our U.S. manufacturing facilities to ensure decades of use

Exceptional 24/7 support from Madison, WI-based Customer Care team

**ACCESSORIES**

15" Stainless Door Panel with Pro Handle

Replacement water filter

Cleaner and sanitizing solution

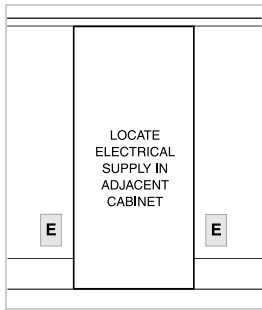
Accessories are available through an authorized dealer.  
For local dealer information, visit [subzero-wolf.com/locator](http://subzero-wolf.com/locator).



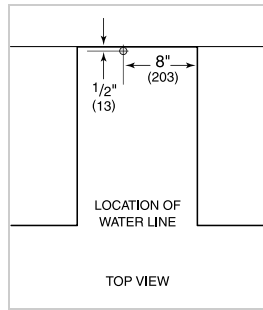
**PRODUCT SPECIFICATIONS**

Model	UC-15IPO
Dimensions	14 3/4"W x 33 5/8"H x 23"D
Door Clearance	18"
Weight	117 lbs
Electrical Supply	115 VAC, 60 Hz
Electrical Service	15 amp dedicated circuit
Receptacle	3-prong grounding-type, GFCI

**ELECTRICAL**



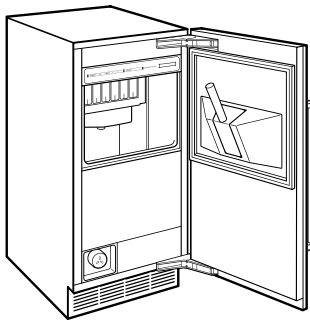
**PLUMBING**



**ICE MACHINE DRAIN** Ice machine models can be ordered with or without a drain pump. Models without a pump will drain water by gravity. A drain must be provided for all models.

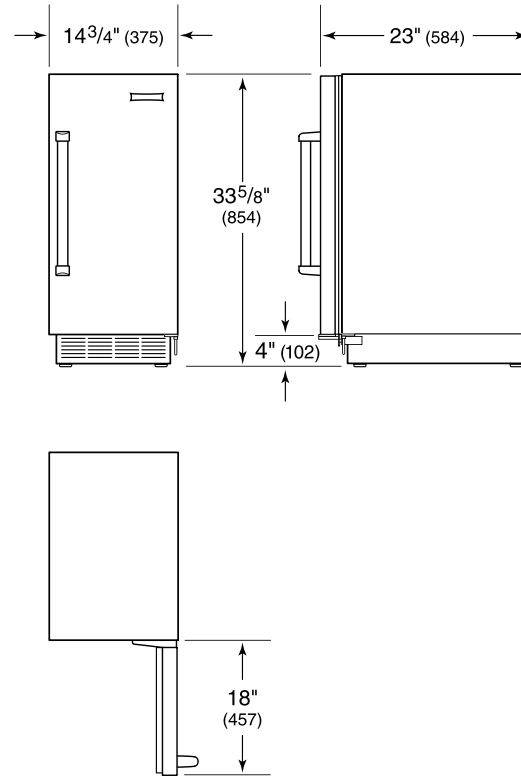
**NOTE:** Dimensions in parenthesis are in millimeters unless otherwise specified

**INTERIOR VIEW**

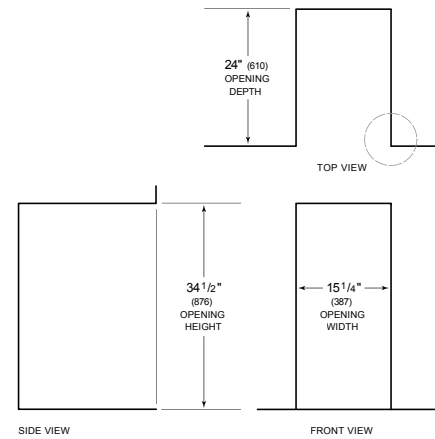


This illustration is intended for interior reference only and may not represent the exterior of the model being specified.

**DIMENSIONS**



**STANDARD INSTALLATION**



**NOTE:** 3 1/2" (89) finished returns will be visible and should be finished to match cabin

