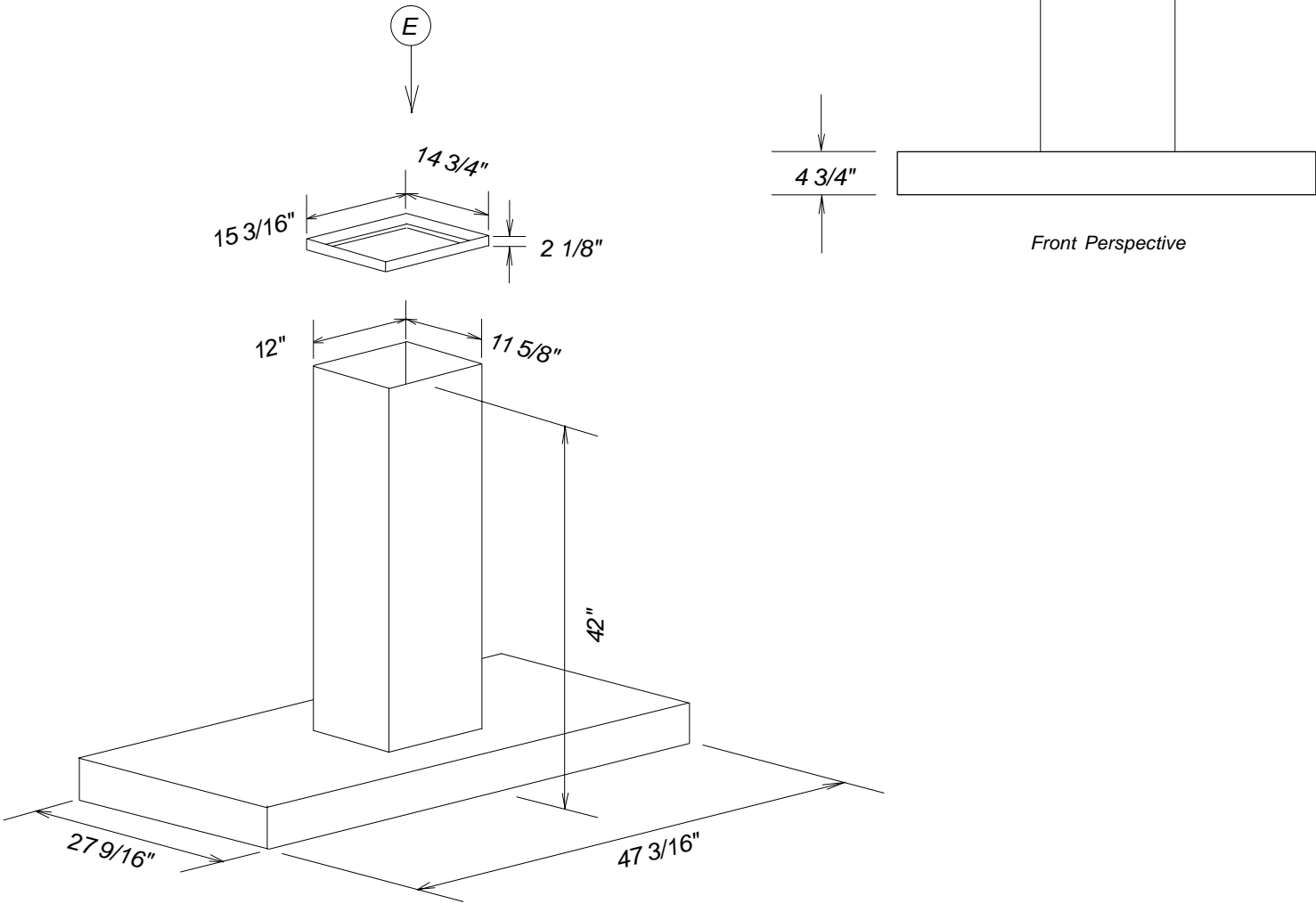


# Product Dimensions

## Decorator Island Hood

### DA5321D



Location Codes
E - 120 Volt - 15 Amp 3-wire power supply connects at top of chimney.
Notes
<ul style="list-style-type: none"> <li>All installations must be done in accordance with local codes.</li> <li>Mounting plate must be used.</li> <li>6" duct connects to mounting plate at top of chimney.</li> </ul>

# Installation Dimensions

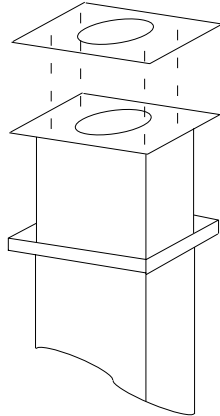
## Decorator Island Hood

### DA5321D

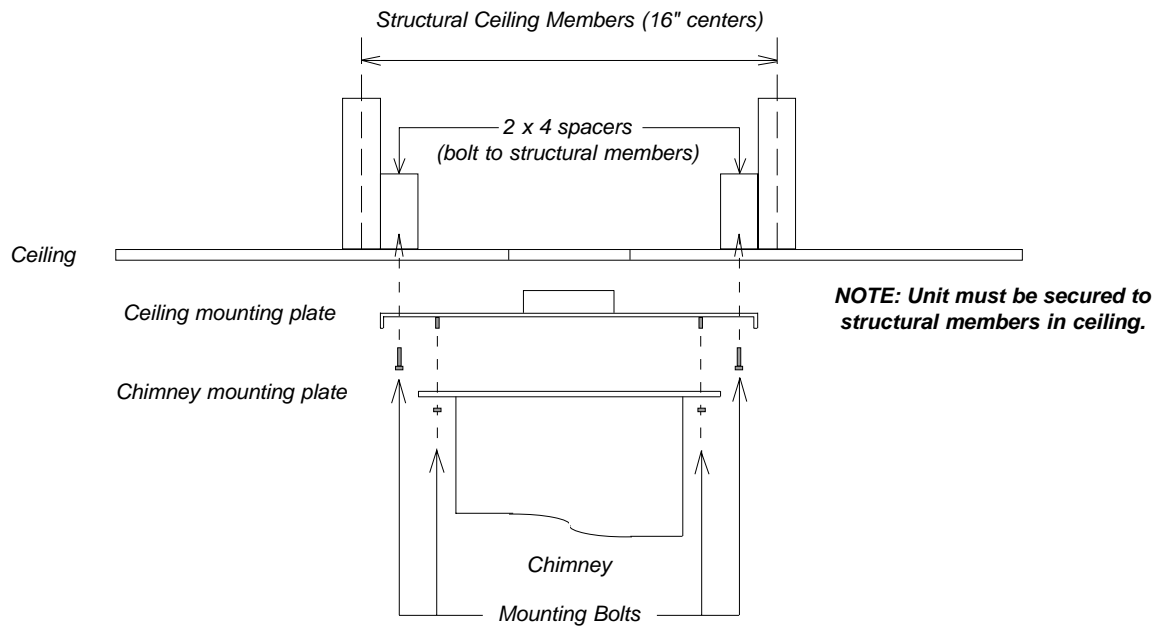
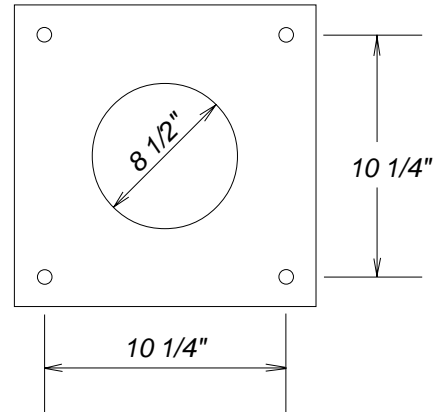


Ceiling mounting plate

Chimney mounting plate



Ceiling Mounting Plate Detail



#### Notes

- Center unit over cooking surface
- Bolt spacers to structural members
- Attach ceiling mounting plate to spacers in ceiling using supplied mounting bolts
- External ducting connects to ceiling mounting plate
- Connect chimney mounting plate to ceiling mounting plate using supplied mounting bolts.

NOTE: Drawing is not to scale.  
SPECIFICATION SHEETS 010508