

**UC - 15I****FEATURES**

Produces up to 50 lbs. of ice per day

Water-filtration system reduces contaminants, chlorine taste and odor

Produces ice in temperatures up to 100° F

Clean and change filter indicator light

Easy-access control panel

Two, four and eight-hour delay feature

Built-in ice scoop

Rigorously tested in our U.S. manufacturing facilities to ensure decades of use

Exceptional 24/7 support from Madison, WI-based Customer Care team

**ACCESSORIES**

15" Stainless Door Panel with Pro Handle

15" Stainless Door Panel with Tubular Handle

15" to 18" Filler

18" Stainless Door Panel with Pro Handle

18" Stainless Door Panel with Tubular Handle

Cleaner for Undercounter Ice Maker

Filter for Undercounter Ice Maker

Sanitizer for Undercounter Ice Maker

Stainless Steel Pro Handles

Stainless Steel Tubular Handles

Replacement water filter

Cleaner and sanitizing solution

Stainless steel front panels with pro or tubular handles

Stainless steel kickplate

Accessories are available through an authorized dealer.  
For local dealer information, visit [subzero-wolf.com/locator](http://subzero-wolf.com/locator).

**HANDLE ACCESSORIES**

PRO



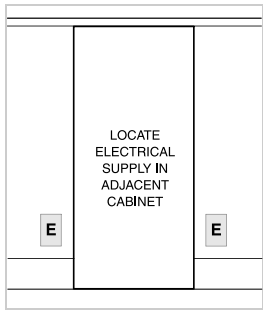
TUBULAR



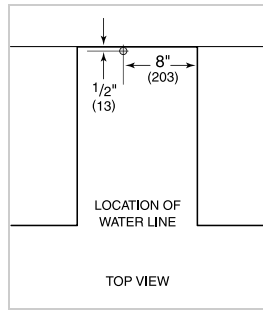
**PRODUCT SPECIFICATIONS**

Model	UC-151
Dimensions	14 3/4"W x 33 5/8"H x 23"D
Door Clearance	18"
Weight	117 lbs
Electrical Supply	115 VAC, 60 Hz
Electrical Service	15 amp dedicated circuit
Receptacle	3-prong grounding-type

**ELECTRICAL**



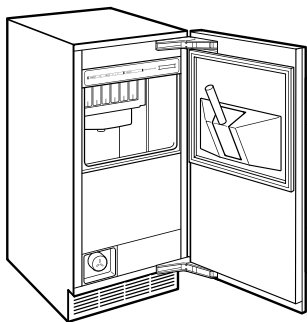
**PLUMBING**



**ICE MACHINE DRAIN** Ice machine models can be ordered with or without a drain pump. Models without a pump will drain water by gravity. A drain must be provided for all models.

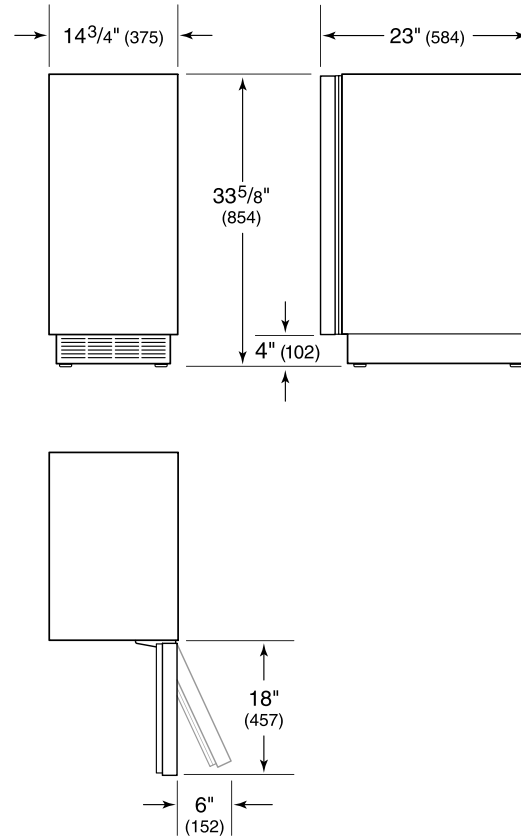
**NOTE:** Dimensions in parenthesis are in millimeters unless otherwise specified

**INTERIOR VIEW**

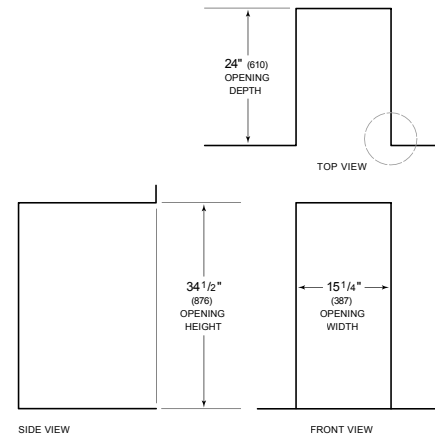


This illustration is intended for interior reference only and may not represent the exterior of the model being specified.

**DIMENSIONS**



**STANDARD INSTALLATION**



**NOTE:** 3 1/2" (89) finished returns will be visible and should be finished to match cabin

