

BI-42UFDID/O



FEATURES

- Discreet interior water dispense with advanced filtration

- LED Lighting for brighter interior

- Overlay design accepts cabinetry panels of all kinds

- Maximum capacity in a 42" French door model

- Dual refrigeration keeps food fresher longer

- Air purification system fights spoilage, odors

- Crispers and deli drawers in low-temp, high-humidity zones for optimum freshness

- Microprocessor control assures peak performance

- Two-column shelving for customized storage

- Soft-close deli drawer for meats, cheeses and more

- Freshness cards for maximum food preservation

- Rigorously tested in our U.S. manufacturing facilities to ensure decades of use

- Exceptional 24/7 support from Madison, WI-based Customer Care team

- Over-and-under refrigerator/freezer storage

- Magnetic door seal system locks in cold air

- Automatic ice maker with "max ice" feature

- Adjustable shelves for maximum convenience

ACCESSORIES

- 42" Stainless Steel Kickplate

- Air Purification Cartridge

- Custom Front Panel Mounting Kit

- Egg Container

- Extended Framed Handle Kit

- Framed Handle Kit

- Framed Louvered Grille Insert

- Framed Stainless Steel Front Panels

- Framed White Front Panels

- Pro Louvered Flush Inset Grille - 84"

- Stainless Steel Flush Inset Door Panel with Pro Handle

- Stainless Steel Flush Inset Door Panel with Tubular Handle

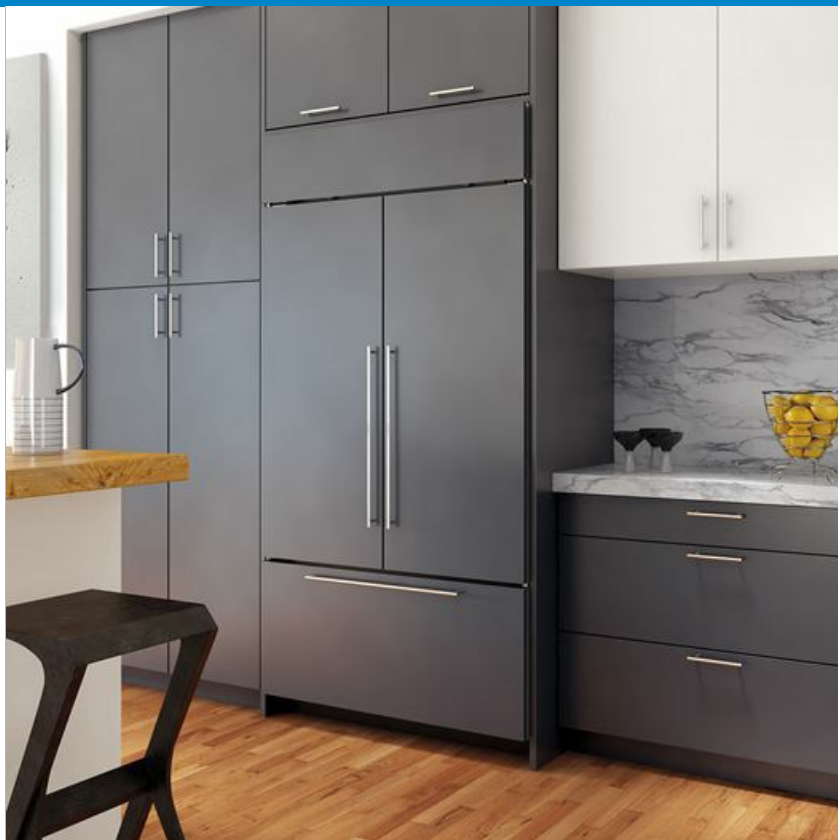
- Stainless Steel Flush Inset Drawer Panel with Pro Handle

- Stainless Steel Flush Inset Drawer Panel with Tubular Handle

- Stainless Steel Flush Inset Grille Panel

- Stainless Steel Side Panel

- Water Filter 4204490



HANDLE ACCESSORIES



PRODUCT DETAILS

REFRIGERATOR

- 6 Adjustable glass shelves
- 1 Stationary glass shelf
- 1 Deli drawer with dividers
- 2 Crisper drawers
- 4 Adjustable door shelves
- 2 Stationary door shelves
- 2 Adjustable dairy compartments

FREEZER

- Full-extension roll-out freezer drawer
- Two-tier wire storage baskets
- Automatic ice maker

White Side Panel

Side panel mounting kit

Stainless Steel Pro Handles

Stainless Steel Tubular Handles

Built-In Louvered Grilles

Built-In Overlay or Flush Inset Grille Frames

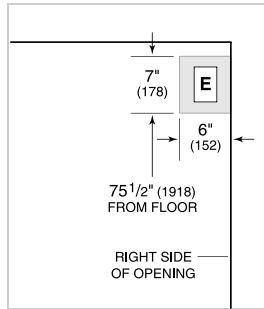
Accessories are available through an authorized dealer.
For local dealer information, visit subzero-wolf.com/locator.

Specifications are subject to change without notice. This information was generated on August 1, 2018. Verify specifications prior to finalizing your cabinetry/enclosures.

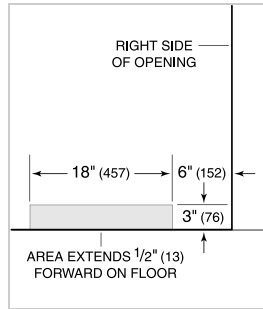
PRODUCT SPECIFICATIONS

Model	BI-42UFDID/O
Dimensions	42"W x 84"H x 24"D
Door Clearance	22 1/4"
Drawer Clearance	23 5/8"
Weight	582 lbs
Refrigerator Capacity	17.9 cu. ft.
Freezer Capacity	6.3 cu. ft.
Electrical Supply	115 VAC, 60 Hz
Electrical Service	15 amp dedicated circuit
Receptacle	3-prong grounding-type

ELECTRICAL



PLUMBING



PANEL SPECIFICATIONS For complete panels specifications including width/height, weight requirements, thickness requirements and offset details visit subzero-wolf.com/builtinconfigurator.

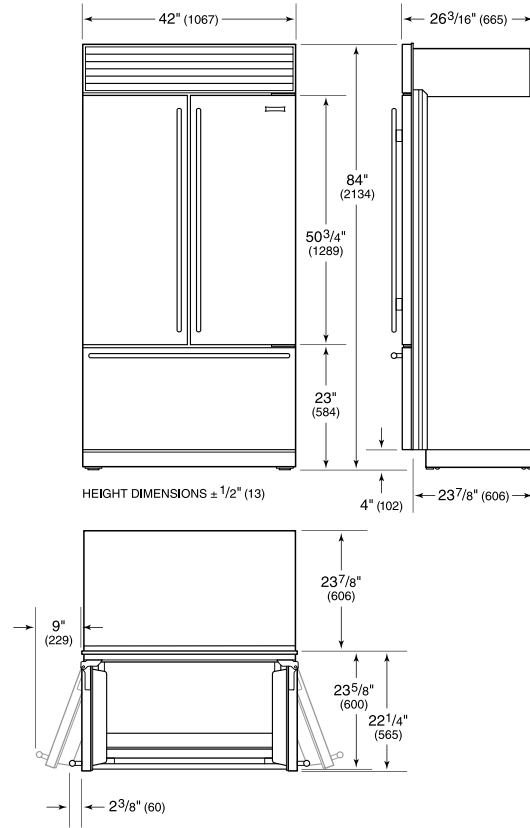
NOTE: Dimensions in parenthesis are in millimeters unless otherwise specified

INTERIOR VIEW

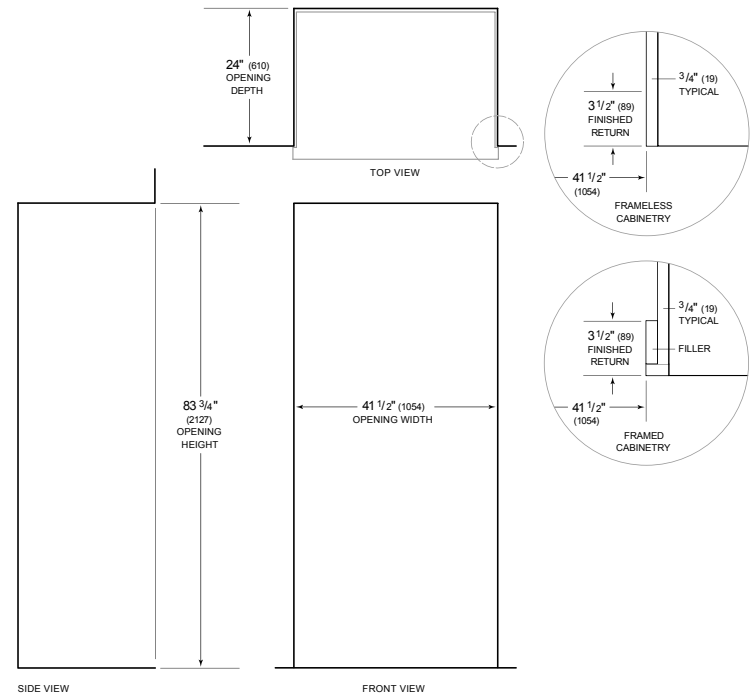


This illustration is intended for interior reference only and may not represent the exterior of the model being specified.

DIMENSIONS



STANDARD INSTALLATION



NOTE: 3 1/2" (89) finished returns will be visible and should be finished to match cabinetry. Shaded line represents profile of unit.