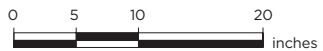
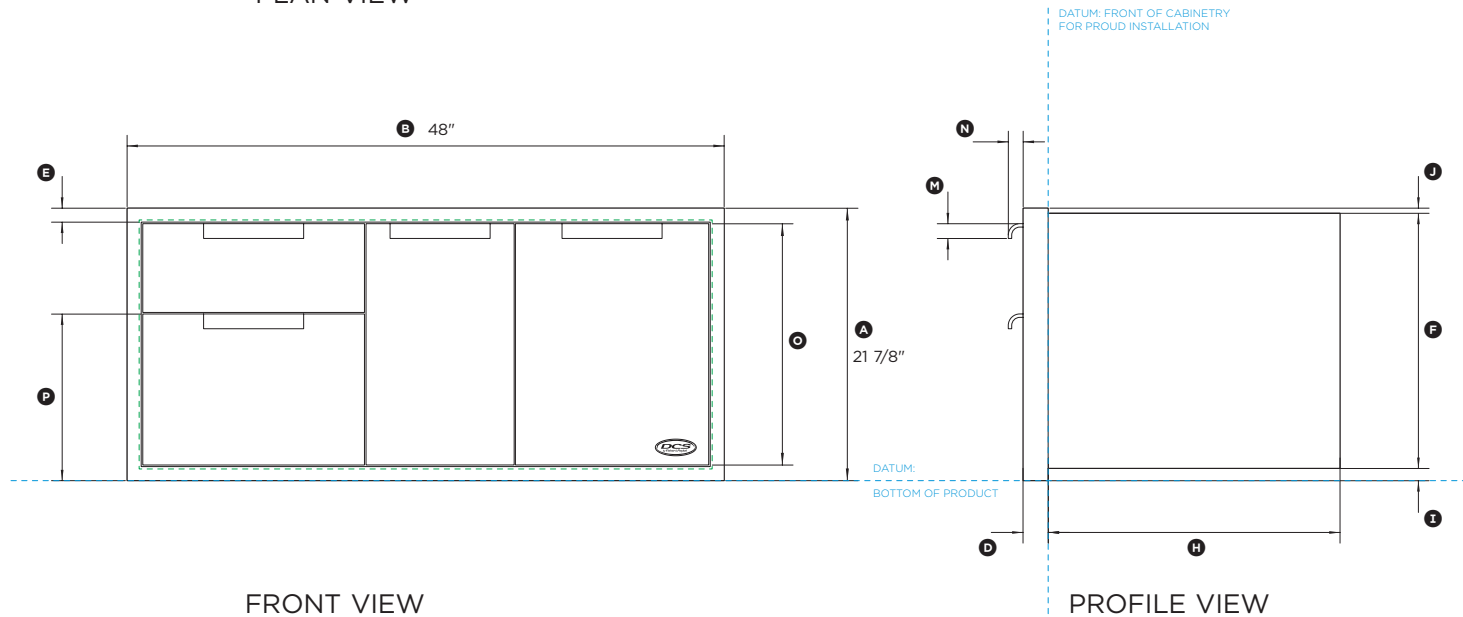
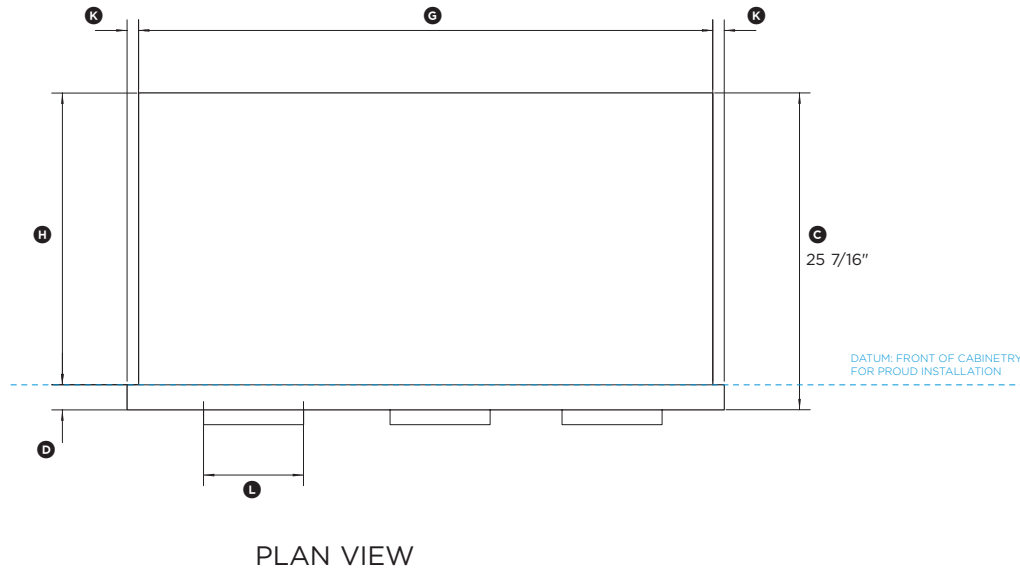


## Data sheet



## 48" Access Drawer

Model no:

**ADR48**

(refer page 2 for metric measurements)

Product Dimensions	in
Ⓐ Overall height of product	21 7/8"
Ⓑ Overall width of product	48"
Ⓒ Overall depth of product (excluding handles)	25 7/16"
Ⓓ Depth of front frame	2"
Ⓔ Width of front frame	1 1/8"
Ⓕ Height of chassis	19 15/16"
Ⓖ Width of chassis	45 15/16"
Ⓖ Depth of chassis	23 7/16"
Ⓗ Height of bottom flange	1"
Ⓘ Height of top flange	7/16"
Ⓚ Width of side flanges	15/16"
Ⓛ Width of handles	8"
Ⓜ Height of handles	1 3/16"
Ⓨ Depth of handles	1 3/16"
Ⓢ Height of tall drawer fronts	19 3/8"
Ⓣ Height from bottom datum to top of lower drawer	13 3/8"

Cutout Dimensions	in
Overall width of cutout	46"
Overall height of cutout	20"

IMPORTANT NOTE: This datasheet shows only the proud installation option. For full installation and clearance details please refer to our installation manual.

INDICATES CABINETY / PRODUCT DATUM -----  
INDICATES CUTOUT -----

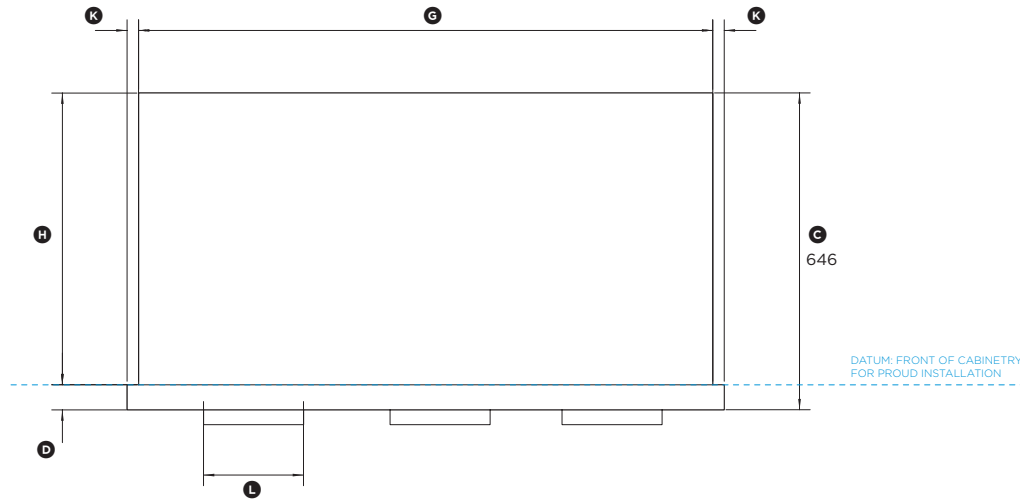
DATE: 31.08.2015

IMPORTANT NOTE: Throughout this guide, dimensions may vary by  $\pm 2\text{mm}$  ( $3/32''$ ). Please read the installation manual for detailed information on installing the product. [www.dcsappliances.com](http://www.dcsappliances.com)

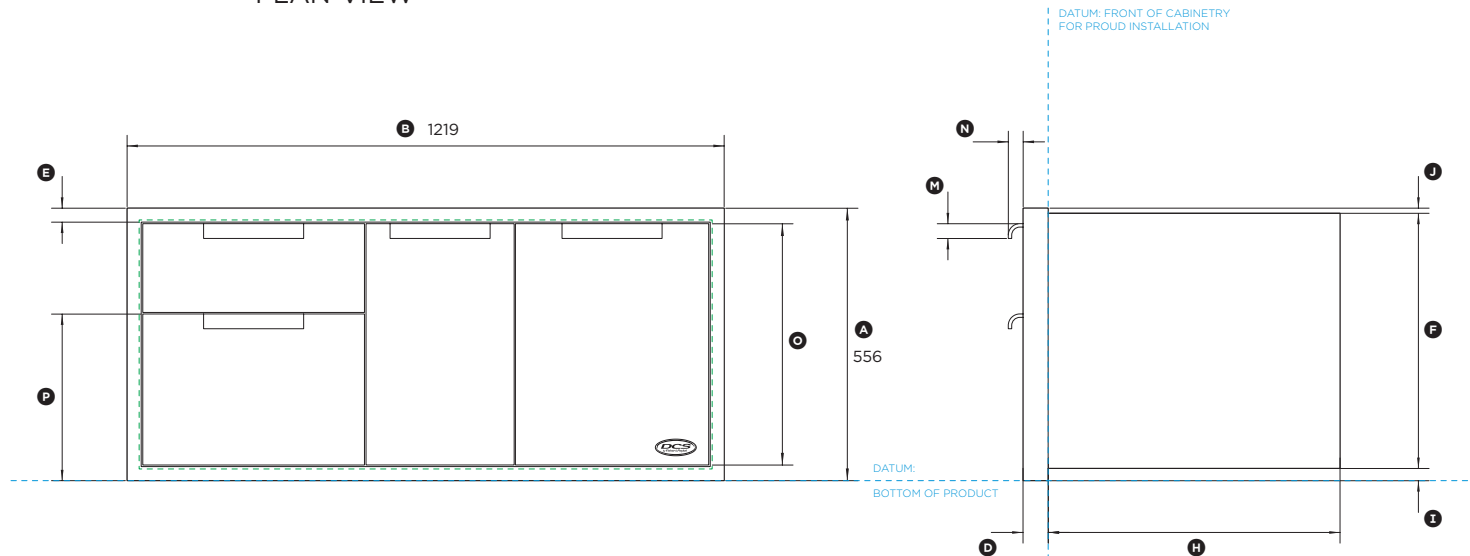


Data sheet

48" Access Drawer



PLAN VIEW



FRONT VIEW

PROFILE VIEW



Model no:

**ADR48**

(refer page 1 for imperial measurements)

Product Dimensions	mm
Ⓐ Overall height of product	556
Ⓑ Overall width of product	1219
Ⓒ Overall depth of product (excluding handles)	646
Ⓓ Depth of front frame	51
Ⓔ Width of front frame	28
Ⓕ Height of chassis	507
Ⓖ Width of chassis	1166
Ⓖ Depth of chassis	595
Ⓗ Height of bottom flange	25
Ⓗ Height of top flange	11
Ⓘ Width of side flanges	23
Ⓛ Width of handles	204
Ⓜ Height of handles	30
Ⓝ Depth of handles	30
Ⓞ Height of tall drawer fronts	492
Ⓟ Height from bottom datum to top of lower drawer	340

Cutout Dimensions	mm
Overall width of cutout	1168
Overall height of cutout	508

IMPORTANT NOTE: This datasheet shows only the proud installation option. For full installation and clearance details please refer to our installation manual.

INDICATES CABINETRY / PRODUCT DATUM -----  
INDICATES CUTOUT -----

DATE: 31.08.2015

IMPORTANT NOTE: Throughout this guide, dimensions may vary by ±2mm (3/32"). Please read the installation manual for detailed information on installing the product. [www.dcsappliances.com](http://www.dcsappliances.com)

