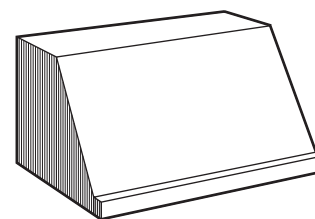


K260A SERIES RANGE HOOD



Provides high ventilation and durable construction to meet the needs of professional-style cooking appliances. A complete installation requires several optional components.

FEATURES

- 430 Stainless Steel construction - 22 gauge
- Hood width: 30" to 60" in 6" increments
- Halogen lighting (2 x 50 watt GU10 for 30", 36" and 42" hood, 4 x 50 watt GU10 for 48", 54" and 60" hood) Lamps included
- Switch controls: lighting, on-off, blower infinite speed
- Easily accessible, dishwasher-safe baffle filters
- Heat Sentry turns blower ON to HIGH speed when excess heat is detected
- For indoor use only

OPTION

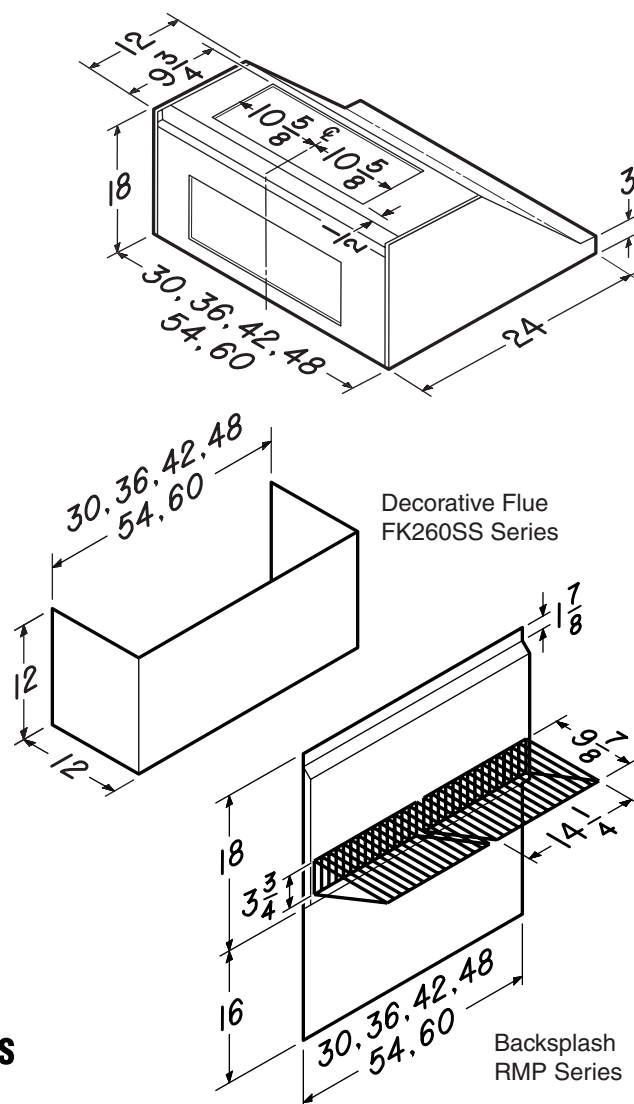
- Backsplash (RMP Series): Widths - 30" to 60" in 6" increments. Stainless Steel construction - protects back wall and wipes clean easily
- Decorative flue (FK260SS Series): Widths - 30" to 60" in 6" increments
Stainless Steel construction - hides ducting and wipes clean easily
- Designed for use with interior blower models P6 or P12, exterior blower models EB6, EB9, EB12, or EB15, and in-line blower models ILB3, ILB6, ILB9 or ILB11 (Purchase blowers separately)

SPECIFICATIONS

120 VAC, 60 Hz

Amps for 36" hood (without blower): 0.8 A

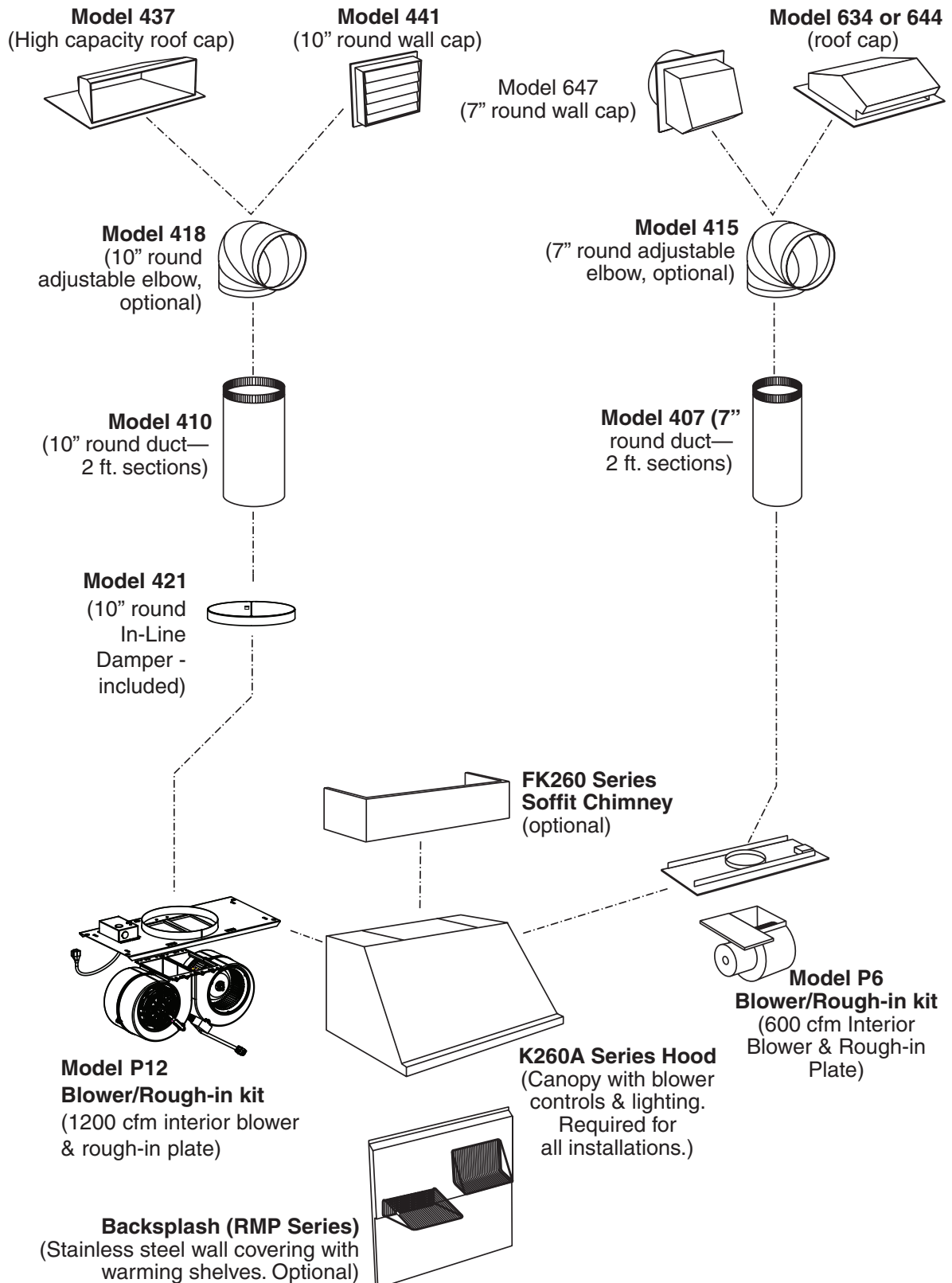
Amps for 48" hood (without blower): 1.7 A



BEST Hartford, Wisconsin www.BestRangeHoods.com 800-558-1711
BEST Drummondville, QC Canada www.BestRangeHoods.com 866-737-7770

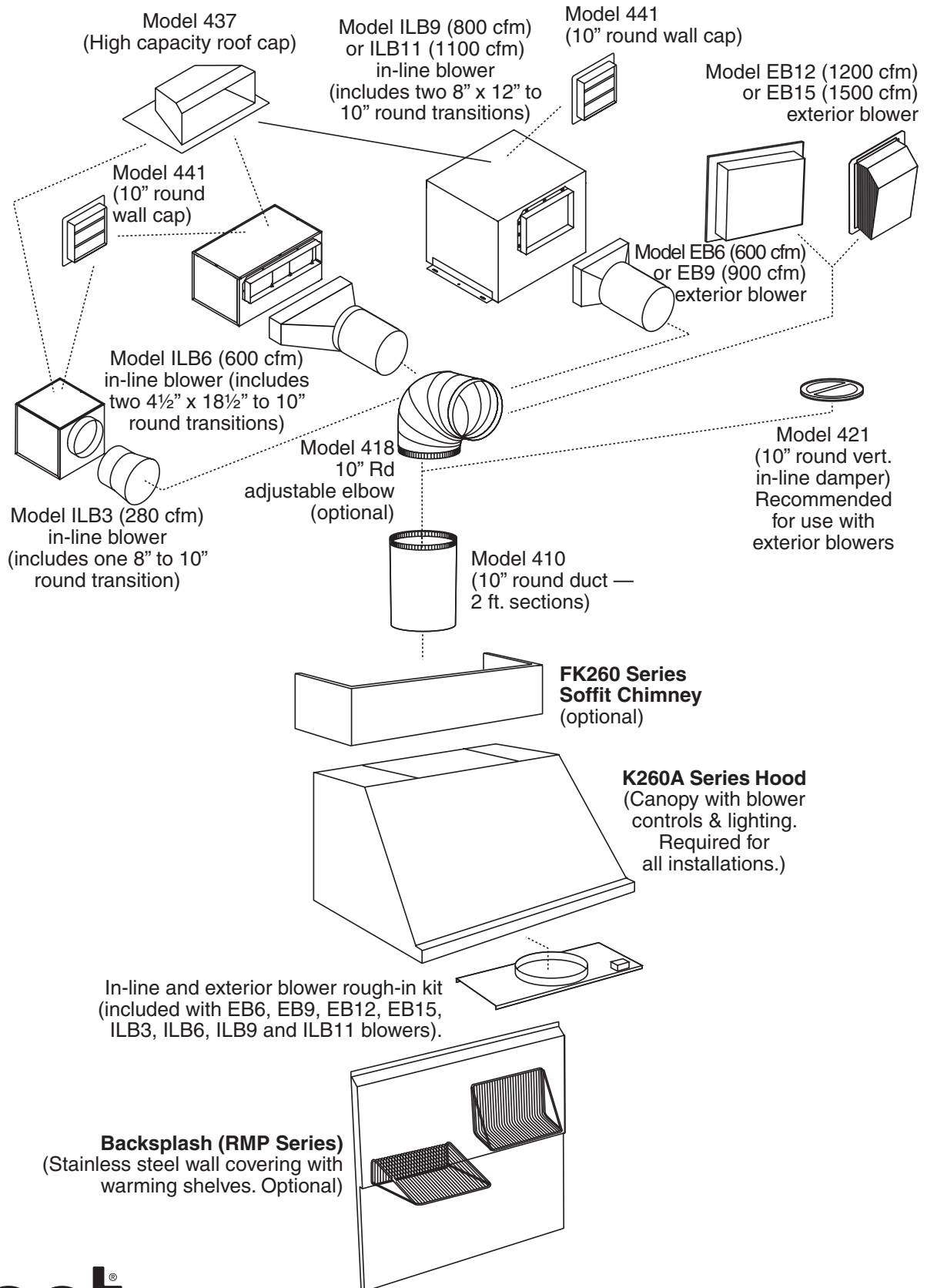
REFERENCE	QTY.	REMARKS	Project	
			Location	
			Architect	
			Engineer	
			Contractor	
			Submitted by	Date

- K260A SERIES RANGE HOOD SYSTEM - INTERIOR BLOWERS



- K260A SERIES RANGE HOOD SYSTEM -

IN-LINE AND EXTERIOR BLOWERS



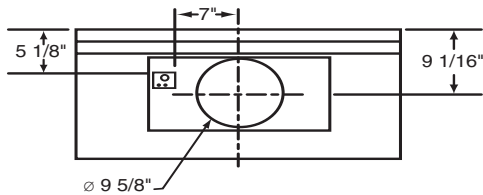
- K260A SERIES RANGE HOOD SYSTEM - BLOWER DUCTING POSITION

BLOWER DUCTING POSITION

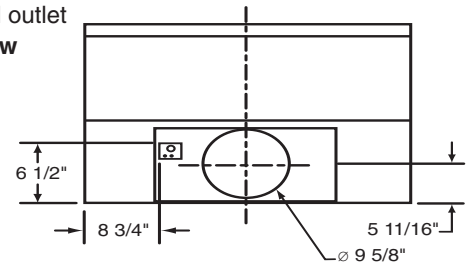
(Choice of transition will determine the final duct placement.)

MODEL EB6, EB9, EB12, EB15, ILB3, ILB6, ILB9, ILB11 & P12:

Horizontal outlet
back view

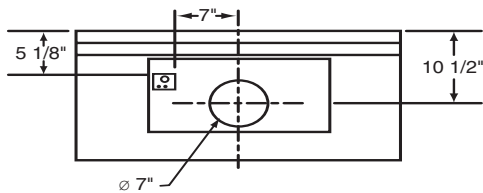


Vertical outlet
top view

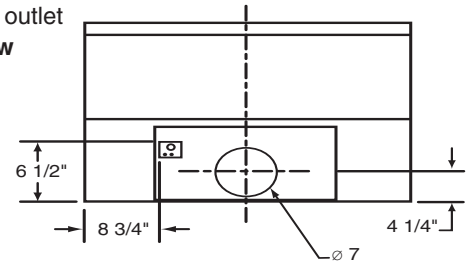


MODEL P6:

Horizontal outlet
back view



Vertical outlet
top view



Note: The electrical box dimensions are 2.5" x 3".